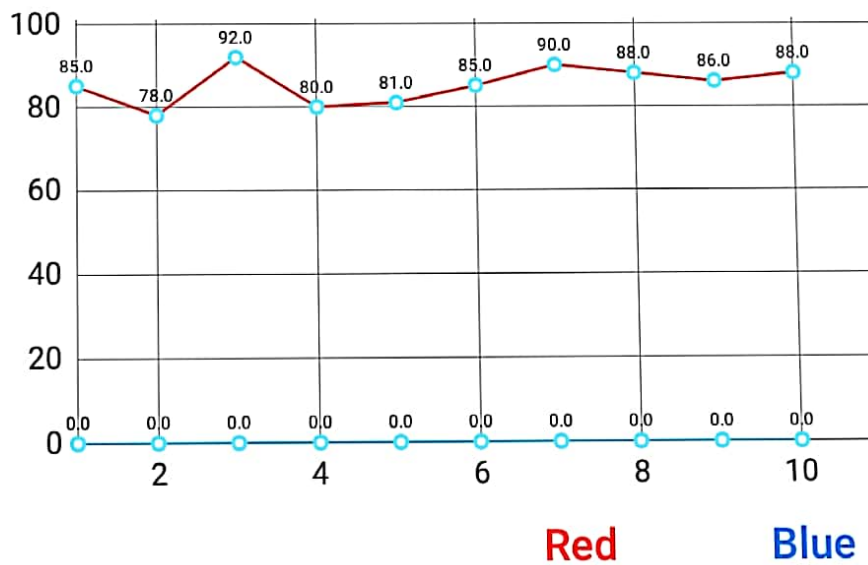


# Test Summary



## Test Results



### Conclusion



Excellent  
Mixing

Incomplete  
Mixing

Chance Probability %

97.66

0.0

Mean

85.30

0.0

Standard Deviation

4.498

0.0

Coefficient of  
Variation %

5.273

0.0

Recovery %

0.0

0.0



## Spot Count



Sample No.

Red

Blue

#1

85

-

#2

78

-

#3

92

-

#4

80

-

#5

81

-

#6

85

-

#7

90

-

#8

88

-

#9

86

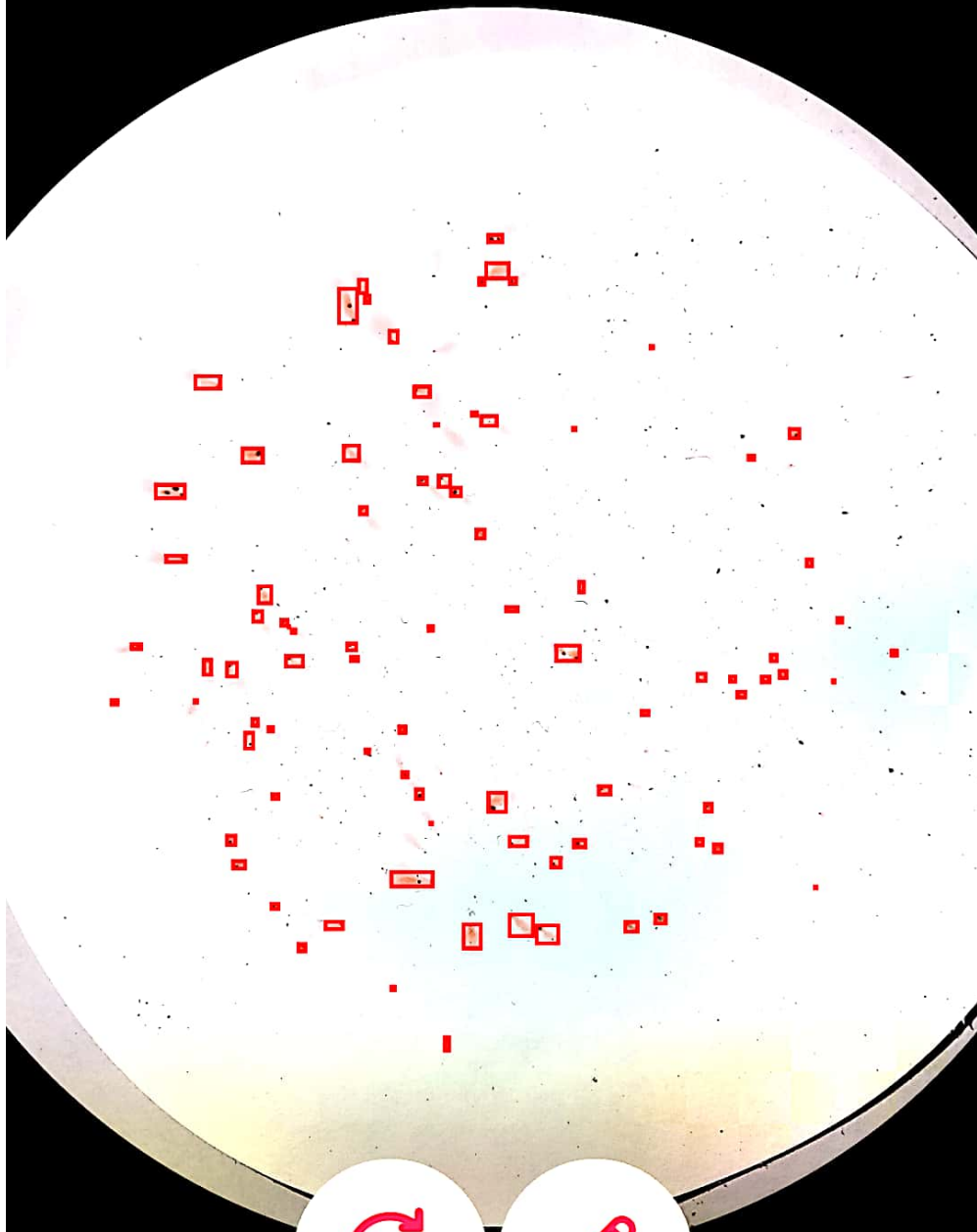
-

#10

88

-

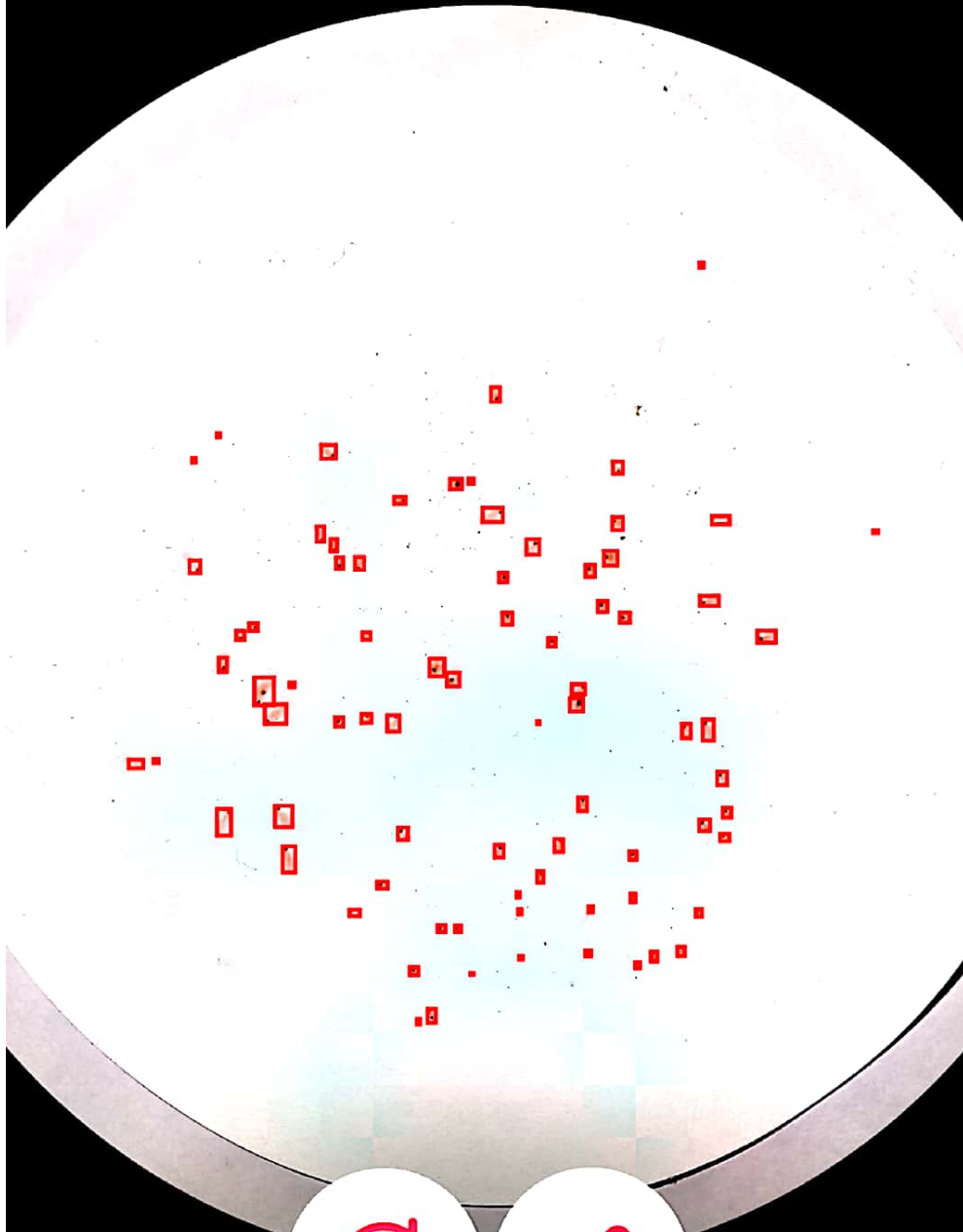




Count

85 / 0

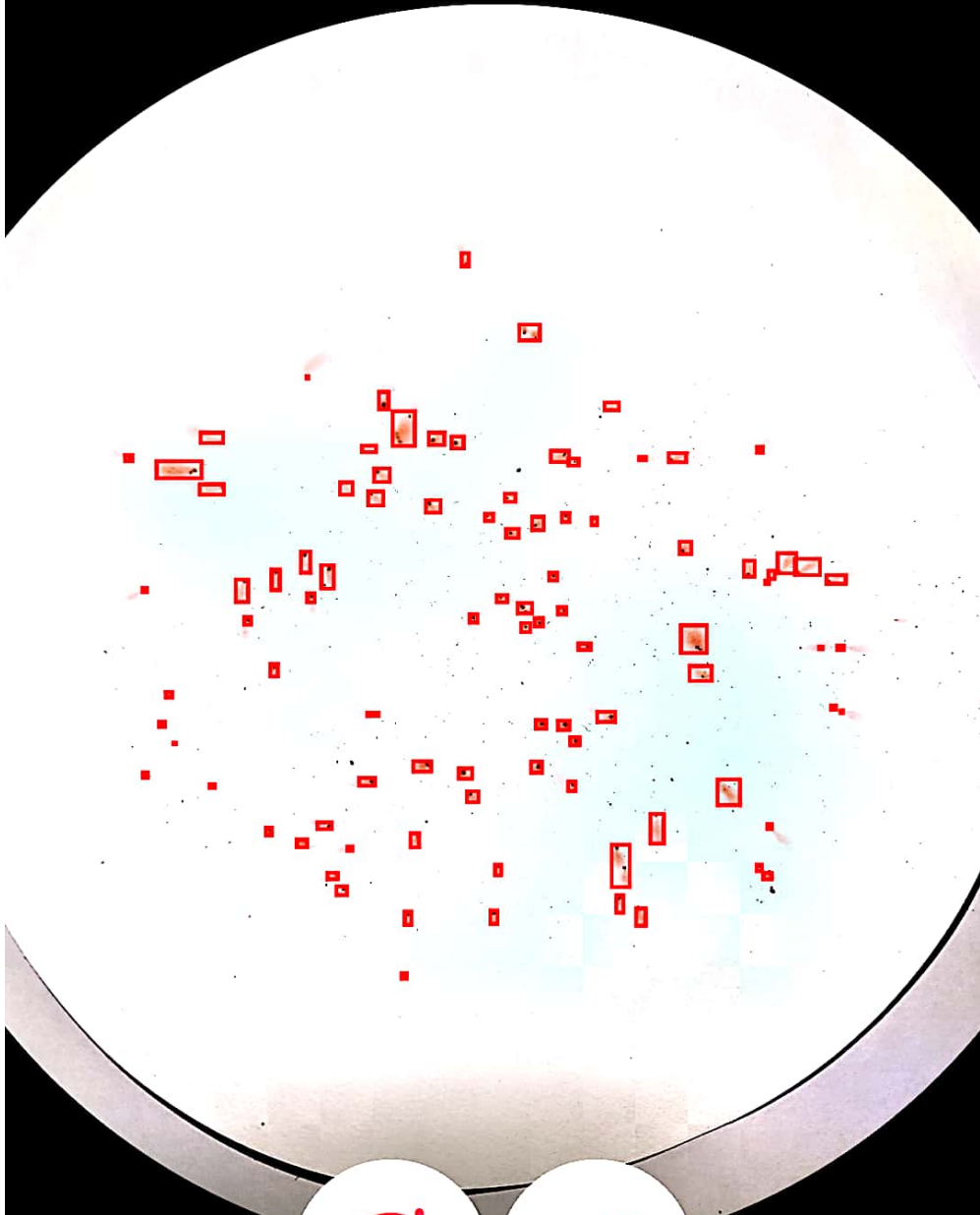




Count

78 / 0

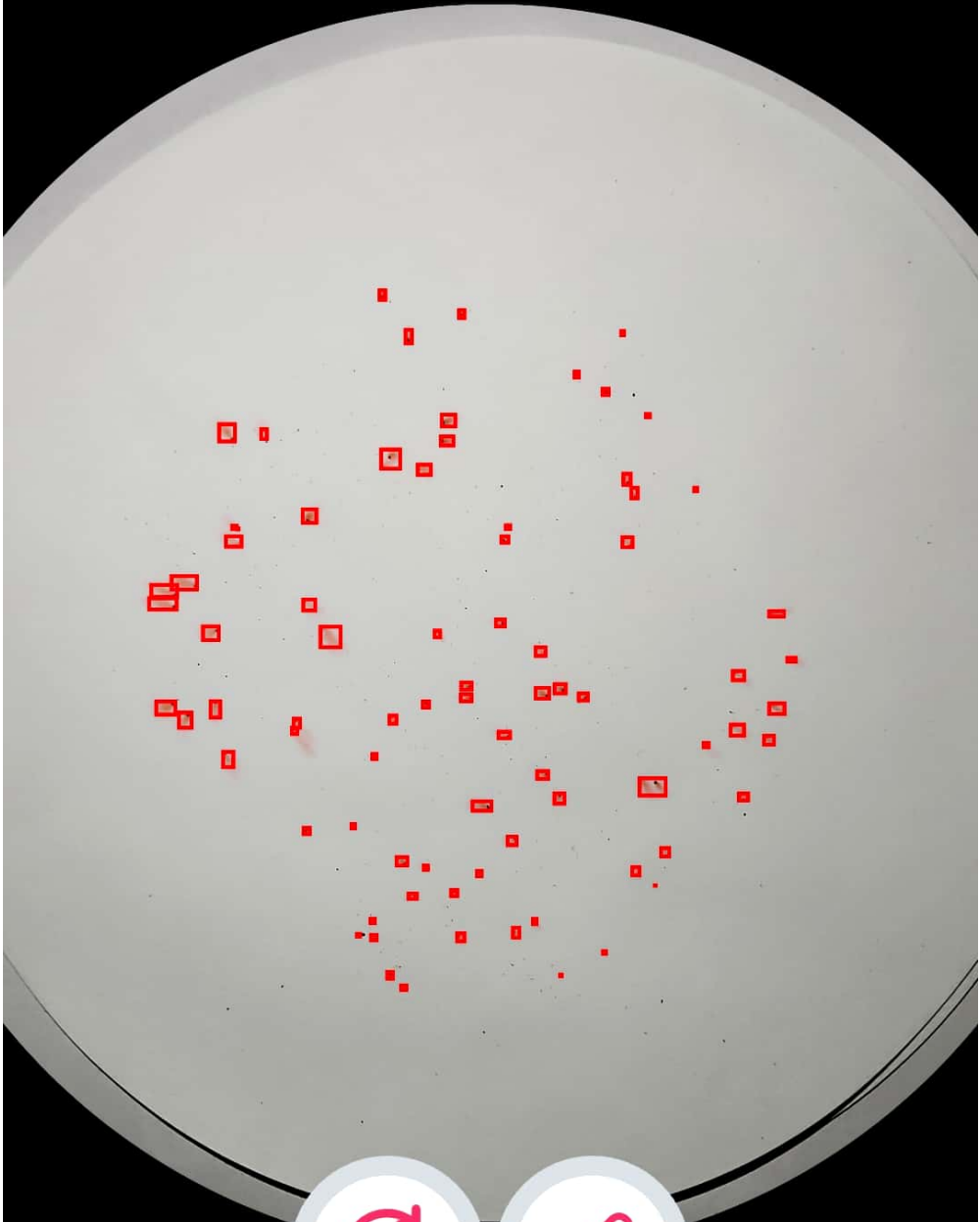




Count

92 / 0

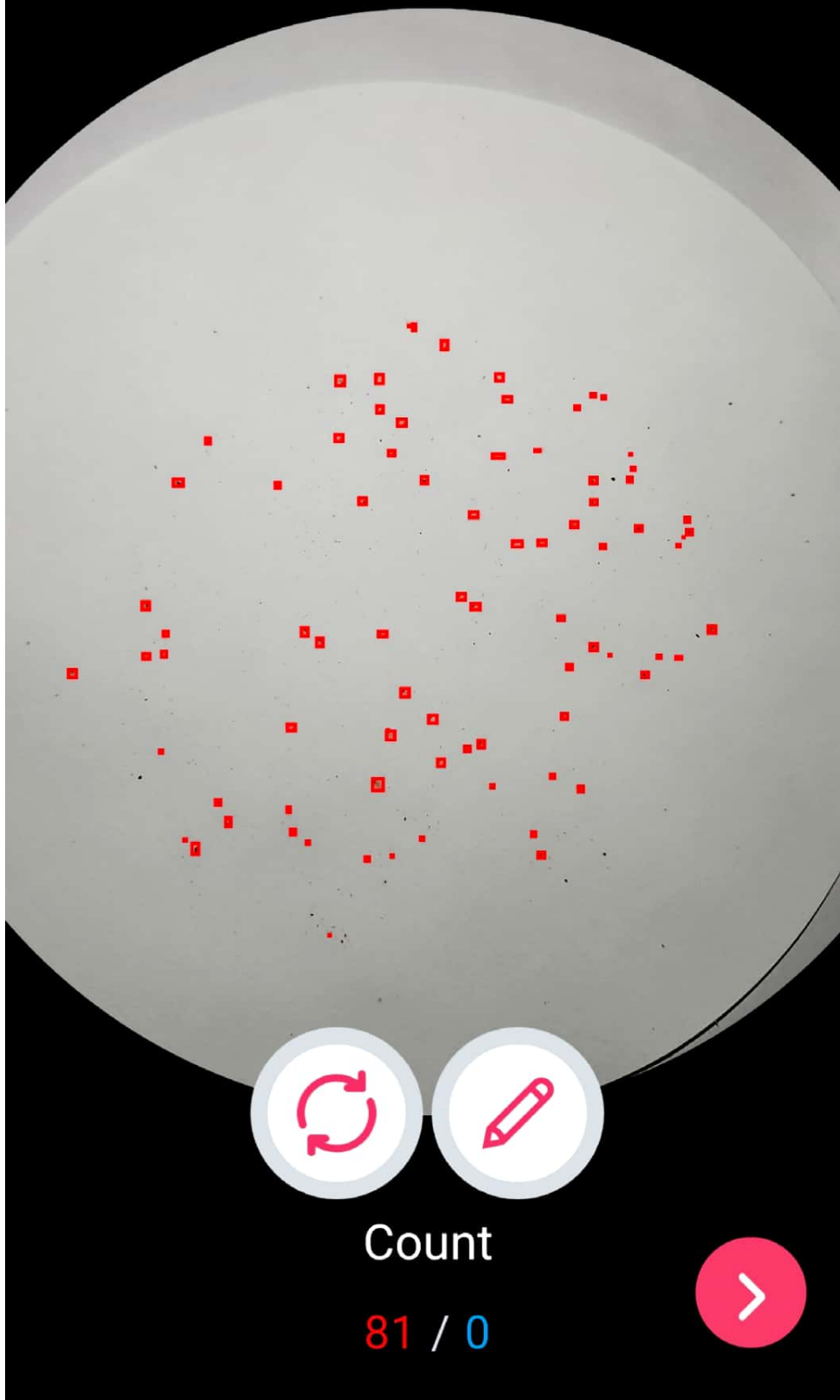


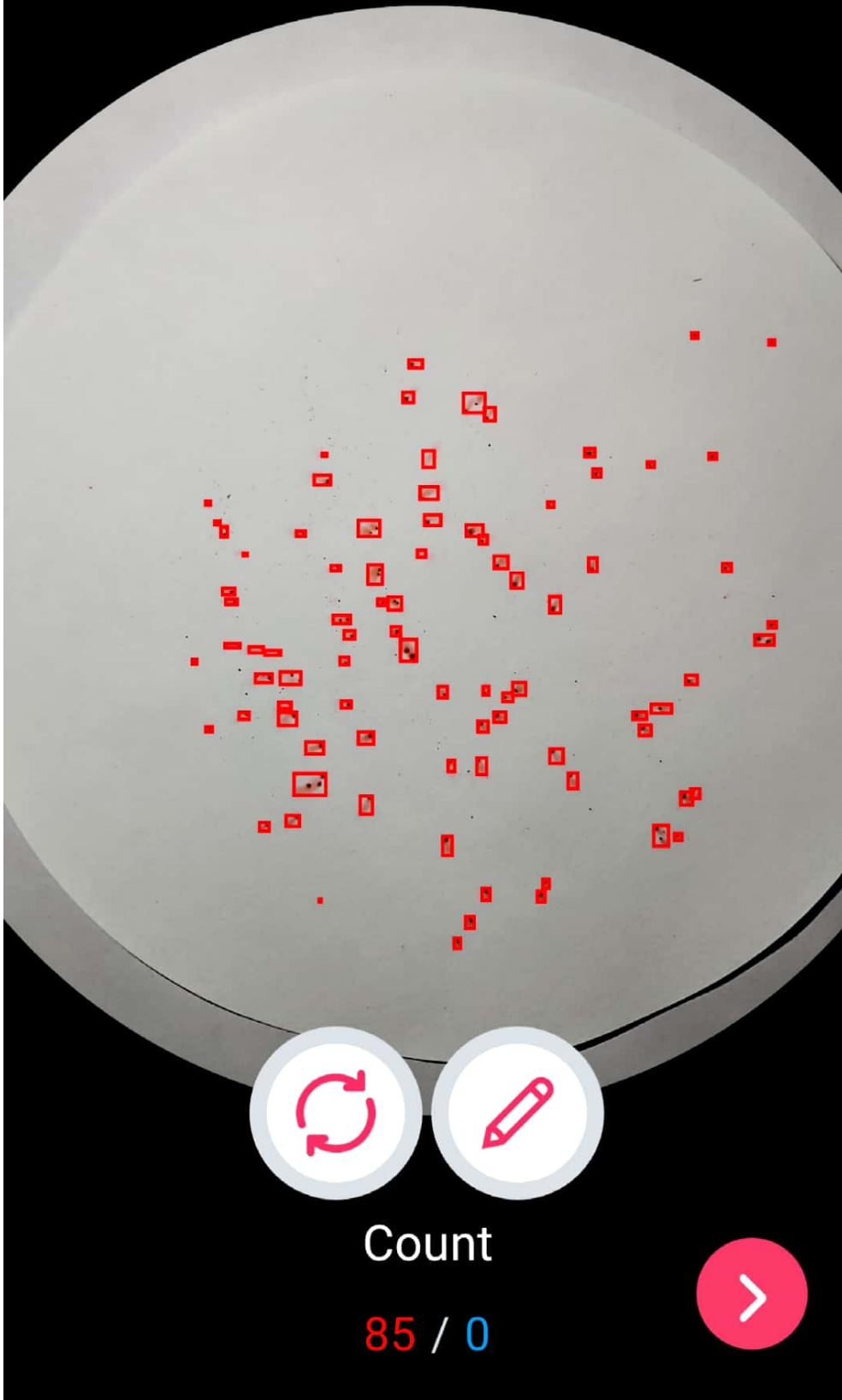


Count

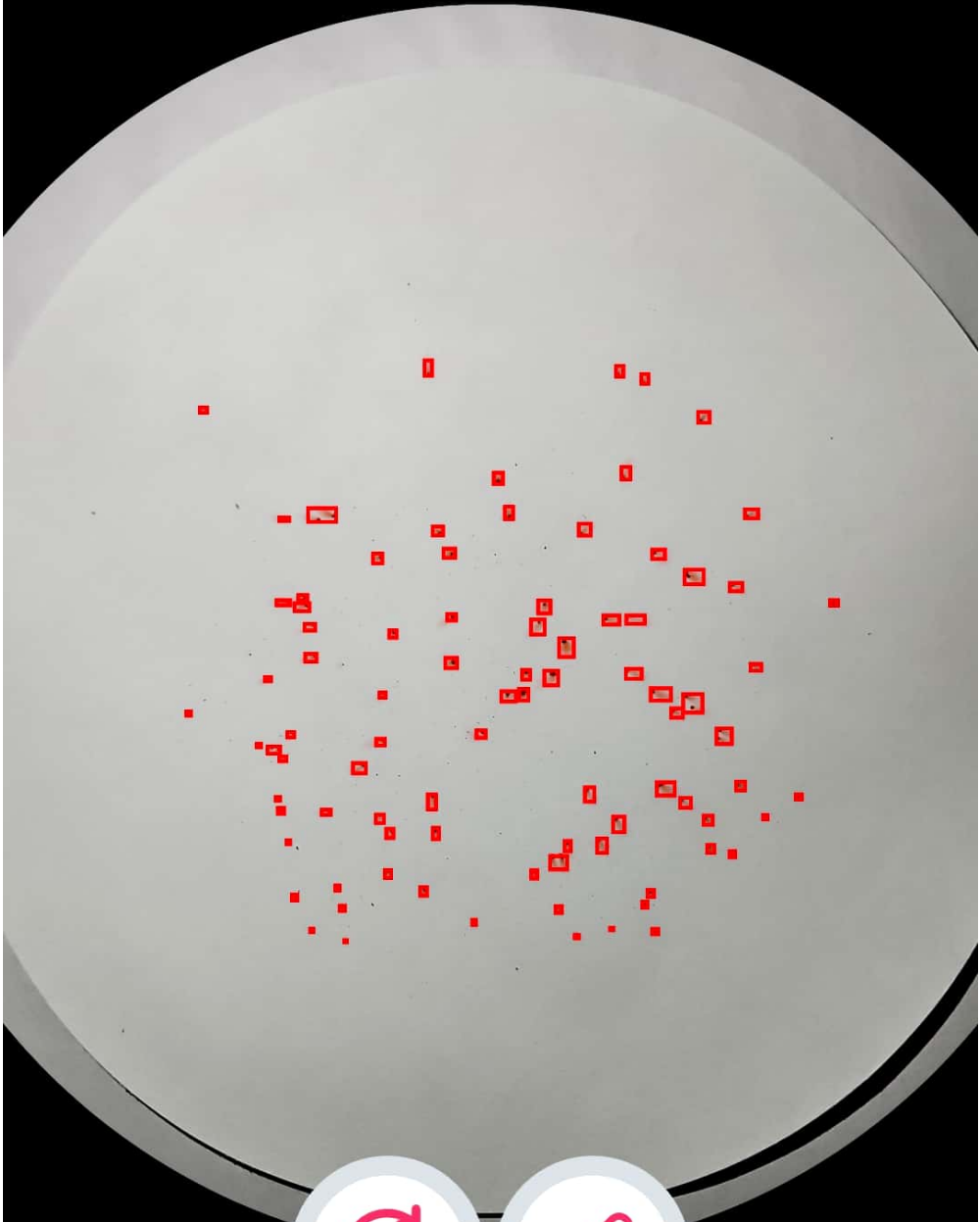
80 / 0







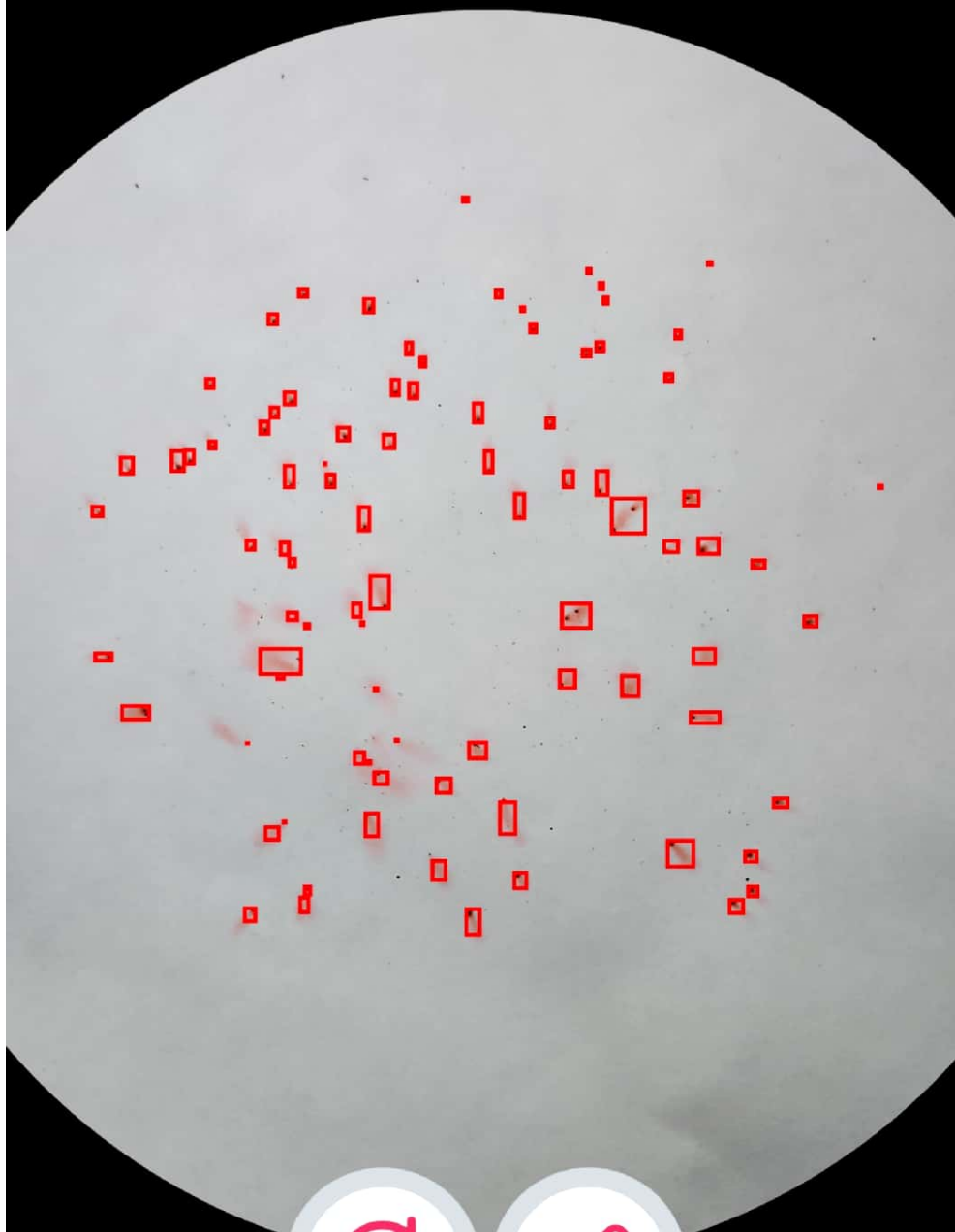




Count

90 / 0

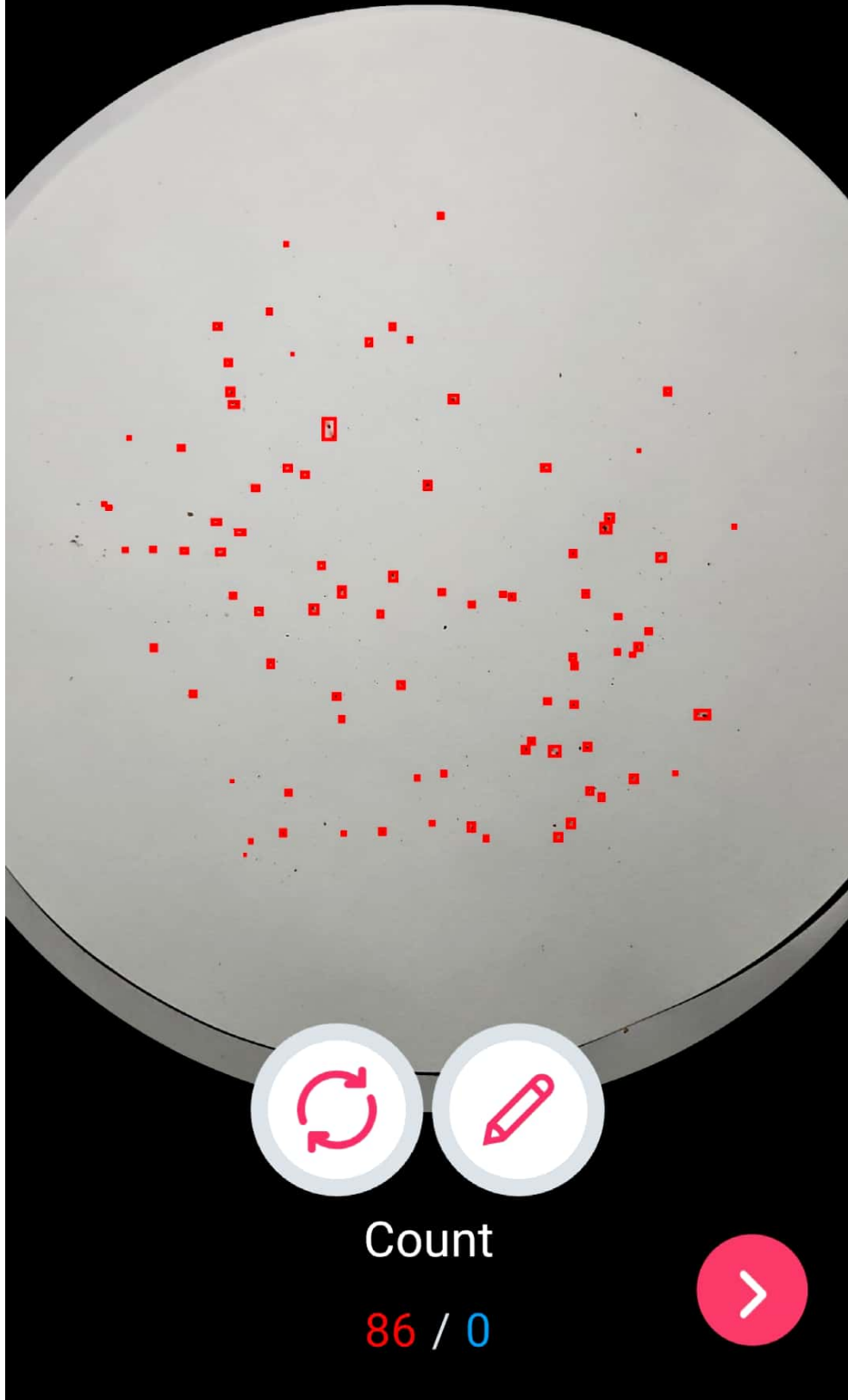


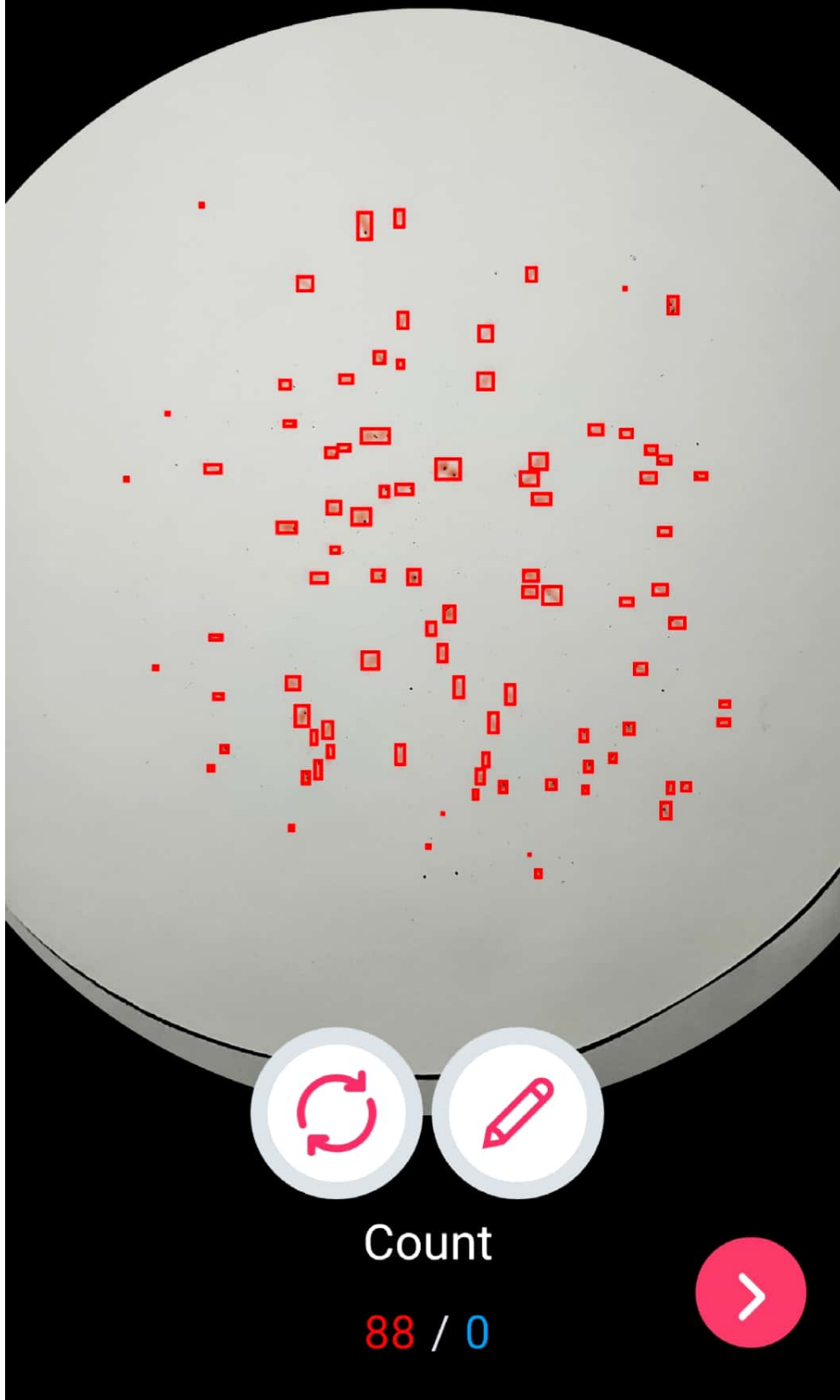


Count

88 / 0







Count

88 / 0

